

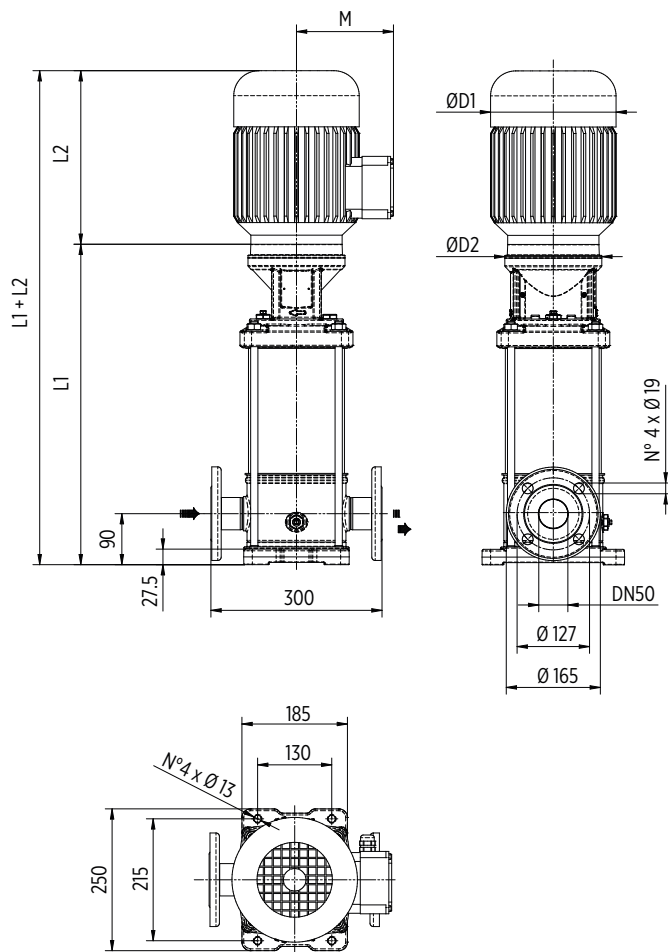
# EV 15 - 50 Hz

## TECHNICAL DATA

Pump Model	MOTOR		Dimensions [mm]										Weight [kg]				
			L1		L2		L3	L4	L5	M		D1		D2	L1+L2	Pump	Motor
	[kW]	Dim	F	1-PHASE	3-PHASE	T	V	C	1-PHASE	3-PHASE	1-PHASE	3-PHASE					
EV 15/1	1.1	80	401	232	232	401	401	401	150	129	160	160	170	633	19.5	11.1	30.6
EV 15/2	2.2	90	411	267	267	411	411	411	160	138	180	180	170	678	21	16	37
EV 15/3	3	100	469	-	306	469	469	469	-	145	-	196	170	775	23	22.8	45.8
EV 15/4	4	112	517	-	306	517	517	517	-	145	-	196	170	823	24.5	26.5	51
EV 15/5	4	112	565	-	306	565	565	565	-	145	-	196	170	871	26	26.5	52.5
EV 15/6	5.5	132	800	-	328	800	800	800	-	160	-	225	300	1128	47.5	33.6	81.1
EV 15/7	5.5	132	848	-	328	848	848	848	-	160	-	225	300	1176	49	33.6	82.6
EV 15/8	7.5	132	896	-	350	896	896	896	-	160	-	225	300	1246	50.5	36	86.5
EV 15/9	7.5	132	944	-	350	944	944	944	-	160	-	225	300	1294	52	36	88
EV 15/10	11	160	1012	-	425	1012	1012	1012	-	194	-	248	350	1437	56	59	115
EV 15/11	11	160	1060	-	425	-	1060	1060	-	194	-	248	350	1485	57.5	59	116.5
EV 15/12	11	160	1108	-	425	-	1108	1108	-	194	-	248	350	1533	59	59	118
EV 15/13	11	160	1156	-	425	-	1156	1156	-	194	-	248	350	1581	60.5	59	119.5
EV 15/14	11	160	1204	-	425	-	1204	1204	-	194	-	248	350	1629	62	59	121
EV 15/15	15	160	1252	-	476	-	1252	1252	-	194	-	248	350	1728	63	68	131
EV 15/16	15	160	1300	-	476	-	1300	1300	-	194	-	248	350	1776	64.5	68	132.5
EV 15/17	15	160	1348	-	476	-	1348	1348	-	194	-	248	350	1824	66	68	134

## DIMENSIONAL DRAWINGS

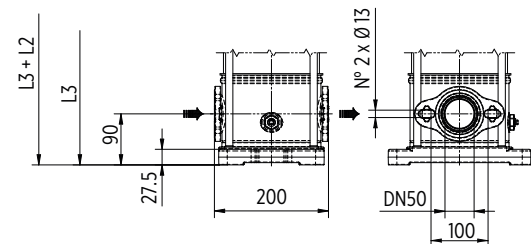
### F Version



Round flanges on body type PN25: the pump is supplied without counterflanges (Optional accessories, including bolts and joints)

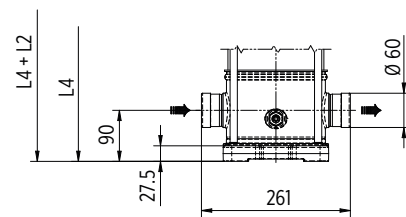
### T Version

Available from EV15/1 to EV15/10



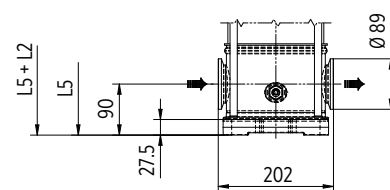
Oval flanges on body type PN16: the pump is supplied without threaded oval counter flanges (Optional accessories, including bolts and joints)

### V Version



Connections with rapid fittings type "Victaulic": the pump is supplied without the collars (Optional accessories)

### C Version



Connections with round fittings type Clamp-FlexiClamp: the pump is supplied without collars (Optional accessories)

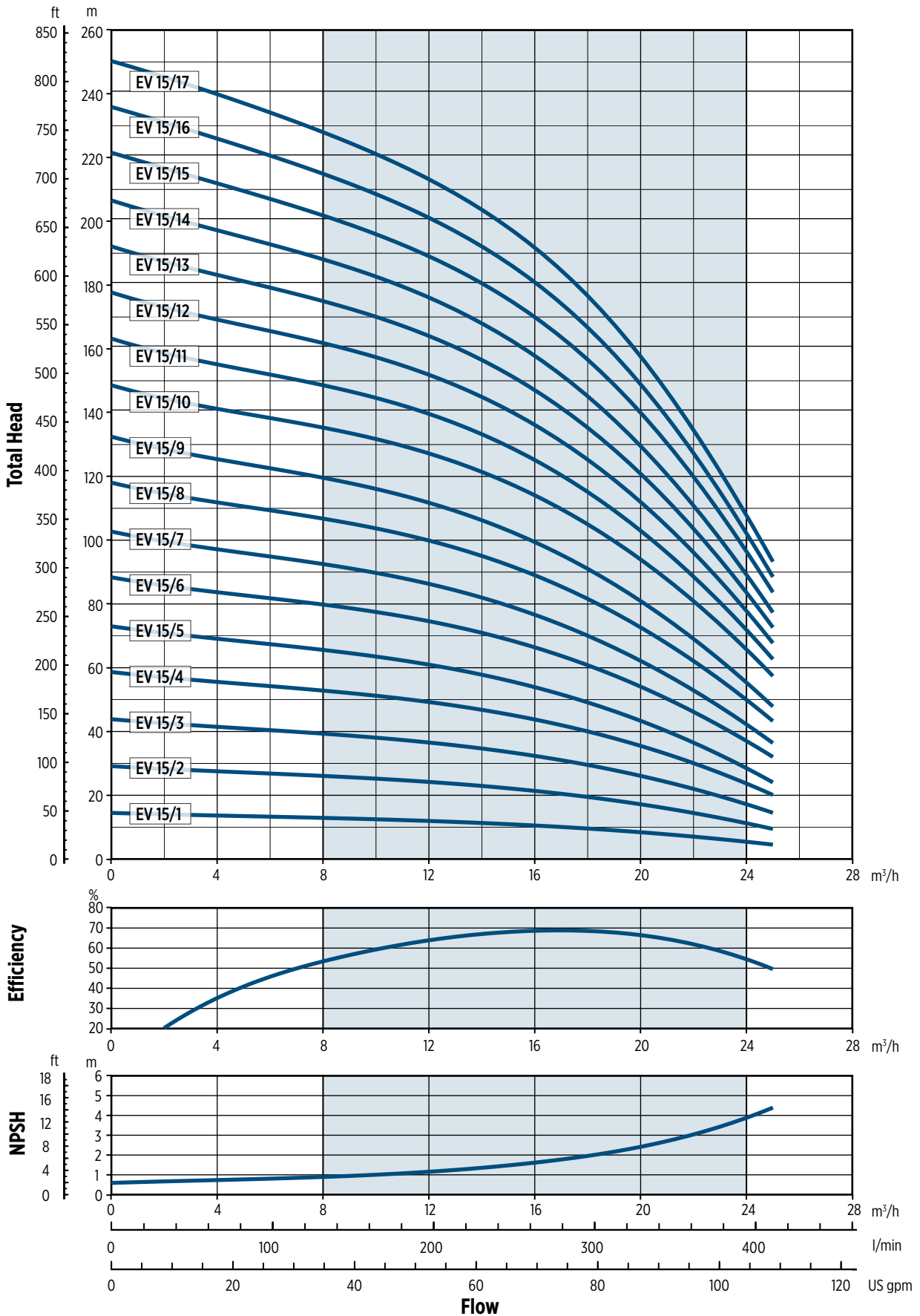
0013002EN 02/2018

EV 15-20

Pump model	RATED POWER		Q = DELIVERY												
			H1	l/min 0	133	167	200	233	266	300	333	367	400	433.5	466.5
	[kW]	[HP]	Bar	m <sup>3</sup> /h 0	8	10	12	14	16	18	20	22	24	26	28
			H = TOTAL HEAD METERS COLUMN OF WATER [m]												
EV 15/1	1.1	1.5	20	14.5	13	12.5	12	11.5	10.5	9.5	8.5	7	5.5		
EV 15/2	2.2	3	20	29	26	25	24	23	21.5	19.5	17	14	11		
EV 15/3	3	4	20	43.5	39	38	36.5	34.5	32.5	29.5	26	21.5	17		
EV 15/4	4	5.5	20	58	52.5	51	49	46.5	44	40.5	35.5	29.5	23.5		
EV 15/5	4	5.5	20	72.5	65.5	63.5	60.5	57.5	54.5	49.5	43	36	28.5		
EV 15/6	5.5	7.5	20	87.5	79.5	77	74	71	67	61.5	54	46	36.5		
EV 15/7	5.5	7.5	20	102	92	89	86	82	77.5	70.5	62	52.5	41.5		
EV 15/8	7.5	10	20	117	106.5	103	99.5	95	90	82.5	72.5	62	49		
EV 15/9	7.5	10	20	131.5	119	115.5	111	106	100.5	92	81	69	54.5		
EV 15/10	11	15	20	147.5	134.5	131	126.5	121	115	106	94	80.5	65		
EV 15/11	11	15	20	162	148	143.5	139	133	126.5	116.5	103	88.5	71		
EV 15/12	11	15	20	176.5	161	156.5	151	144.5	137.5	126.5	112	96	77		
EV 15/13	11	15	20	191	174.5	169	163.5	156.5	148.5	136.5	120.5	103	82.5		
EV 15/14	11	15	20	205.5	187.5	182	175.5	168	159	146	129	110.5	88		
EV 15/15	15	20	20	221	201	195.5	188.5	180.5	171.5	157.5	139.5	119.5	95.5		
EV 15/16	15	20	20	235.5	214	208	200.5	192	182.5	167.5	148	126.5	101.5		
EV 15/17	15	20	20	249.5	227.5	220.5	213	203.5	193	177.5	156.5	134	107		
EV 20/1	1.1	1.5	20	15.5		13.5	13	13	12.5	12	11	10	8.5	7.5	6
EV 20/2	2.2	3	20	31		27.5	27	26	25	24	22.5	20.5	18	15	12
EV 20/3	3	4	20	46.5		41.5	40.5	39.5	38	36.5	34.5	31	27.5	23	18.5
EV 20/4	4	5.5	20	62.5		56	55	53.5	51.5	49.5	46.5	42.5	37	31.5	25.5
EV 20/5	5.5	7.5	20	78		70	68.5	66.5	64.5	62	58	53	47	40	32.5
EV 20/6	7.5	10	20	94.5		86.5	84.5	82.5	80	77.5	73.5	67.5	60	52	42.5
EV 20/7	7.5	10	20	110		100.5	98	95.5	93	90	85	77.5	69	59.5	48.5
EV 20/8	11	15	20	126.5		117	114	112	109	106	100.5	92.5	82.5	72	59.5
EV 20/9	11	15	20	142.5		131	128	125.5	122	118.5	112.5	103.5	92.5	80.5	66.5
EV 20/10	11	15	20	158		145.5	142	139	135	131.5	124.5	114	102	88.5	73
EV 20/11	15	20	20	174		160	156.5	153	149	144.5	137	126	113	98	81
EV 20/12	15	20	20	189.5		174.5	170.5	167	162	157.5	149	137	122.5	106.5	87.5
EV 20/13	15	20	20	205		188.5	184	180	175	170	161	147.5	132	114.5	94
EV 20/14	15	20	20	220.5		202.5	198	193.5	188	182.5	172.5	158	141	122	100.5
EV 20/15	18.5	25	20	237		217.5	212.5	208	202	196	185.5	170.5	152	132	108.5
EV 20/16	18.5	25	20	252.5		231.5	226	221	215	208.5	197	181	161.5	140	115
EV 20/17	18.5	25	20	268		245.5	240	234.5	227.5	221	209	191.5	171	148	121.5

# EV 15 - PERFORMANCE CURVES AT 50 Hz

MEI ≥ 0,70



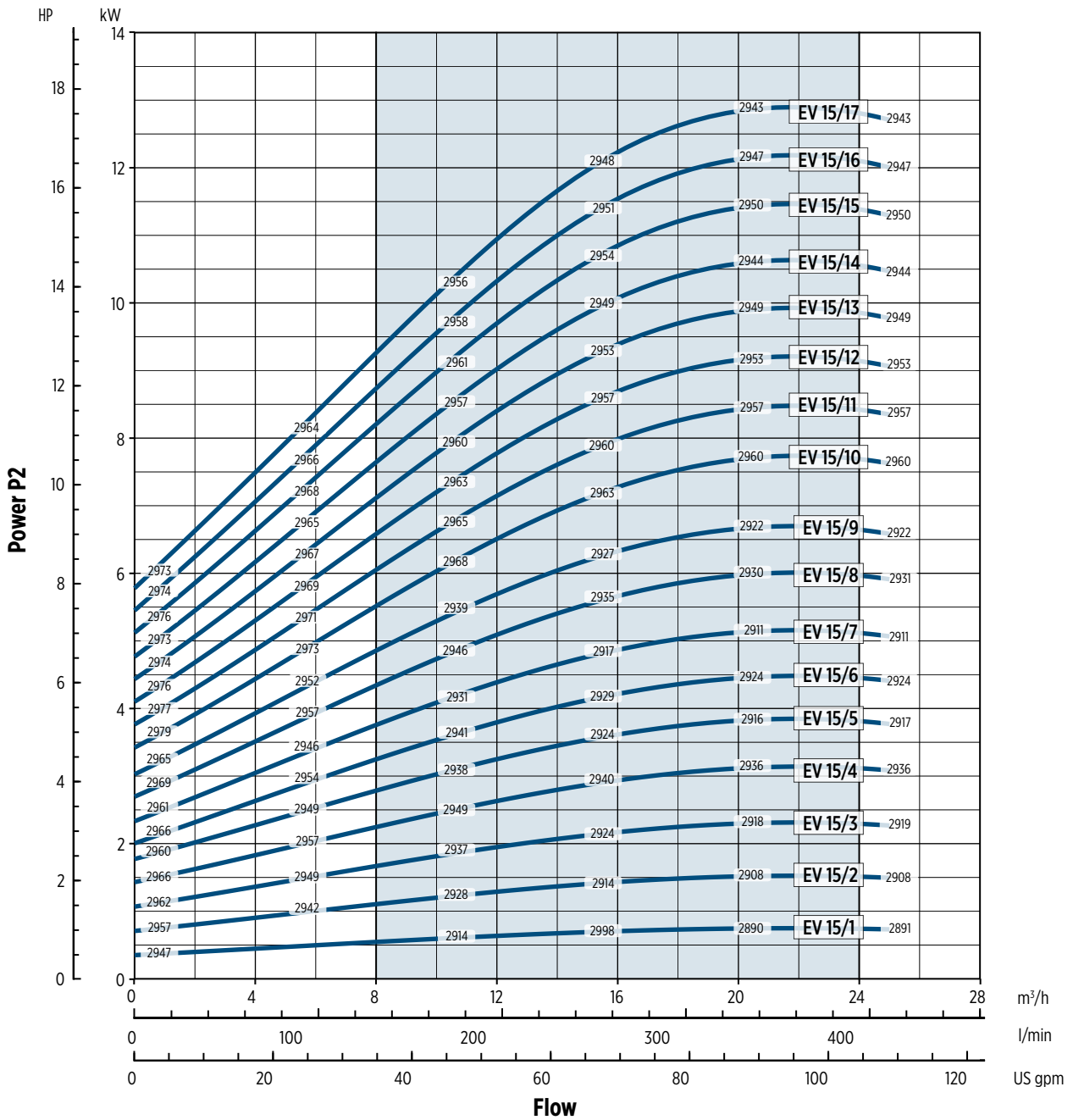
002018EN 02/2018

The hydraulic characteristics are guaranteed, according to ISO Standard 9906:2012, grade 3B



# EV 15 - PERFORMANCE CURVES AT 50 Hz

MEI ≥ 0,70



002018EN 02/2018

Performance curves of Q, H and P depend on the rpm number according to the following formula:

$$Q_2 = Q_1 \cdot \left(\frac{n_2}{n_1}\right), \quad H_2 = H_1 \cdot \left(\frac{n_2}{n_1}\right)^2, \quad P_2 = P_1 \cdot \left(\frac{n_2}{n_1}\right)^3, \quad \eta \text{ remains approximately the same.}$$

The rpm number related to the performance curves (Q-H-P) is indicated in the power chart.

Performance curves (Q-H-P) will change according to the formulas above.

Q=Capacity, H=Head, P=Power, h=Efficiency